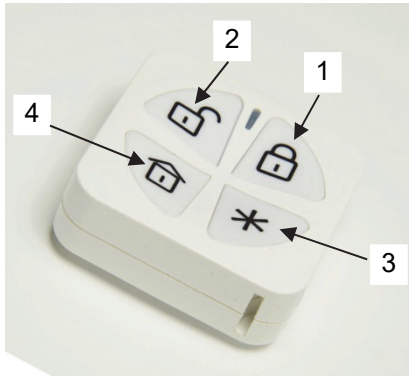


# Panda Wireless 1-Way Keyfob / Remote Control

## Télécommande sans fil monodirectionnelle Panda



Model/Modèle: RW332KF1



### Configuration and User Guide Guide de Configuration et d'Utilisation

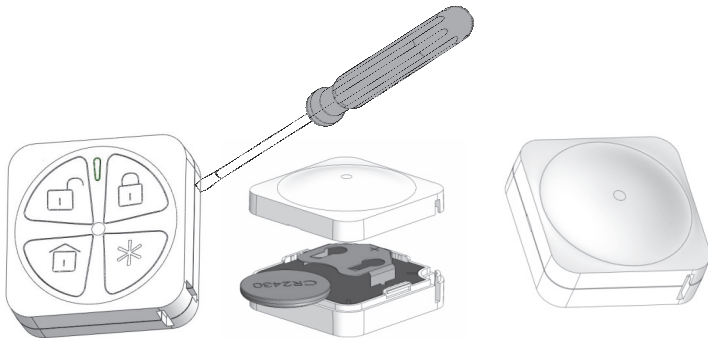


Figure 1

Figure 2

Figure 3

EN

#### Introduction

RISCO Group's new Wireless 1-Way Keyfob / Remote Control combine the most advanced technologies within a contemporary, compact and streamlined design, the ideal choice for homeowners seeking the highest security standards. The keyfob / remote control has been designed for use in family homes, apartments or small offices. This accessory is easy to configure, and is compatible with all RISCO Group's wireless intrusion systems

#### How it works

The principal function of the Keyfob / Remote Control is to provide users with a convenient way to control the security system. This accessory is easy to use with large keys, and is typically used for arming and disarming as well sending a panic alarm to the system. The Keyfob / Remote Control can be mounted on a chain or worn as a pendant.

#### Main features

- Up to 200 m (650 feet) range
- Simple battery replacement
- Modern look and feel

#### Operation:

To operate the Keyfob / Remote Control, press the required button for 1 second. The LED blinks twice after each press, indicating a successful signal transmission.

Common button operations:

	Button 1 () is used to perform the Arming operation and can be configured as: None, Full arming (Away) or Part set (Stay).
	Button 2 () is used to perform the Disarming operation and can be configured as: None, Disarm.
	Button 3 () is used to perform a Panic or Utility Output operation, to receive status information and can be configured as: None, Status Panic or UO (Utility Output).
	Button 4 () can be configured to perform an arming operation (Away or Stay) or can be defined as Utility Output or None.
NOTE: The arming operation for button 1 or 4 can be defined as Instant or Delayed.	

#### Configuration

##### Allocating the Keyfob / Remote Control to the receiver

The 1-Way Keyfob / Remote Control must identify itself with the system receiver. Allocation can be done by entering the keypad's 11-digit serial number into the system or by using RF mode.

To allocate the Keyfob / Remote Control:

1. Set the system receiver to Learn Mode.
2. Send an allocation message:

RF – Press the key for at least 2 seconds.

Code – Enter the 11-digit serial number into the system.

In both instances the system receiver will automatically recognize the Keyfob / Remote Control and an allocation message will sound.

#### Cleaning and Maintenance

##### Cleaning the Keyfob / Remote Control

Clean the Keyfob / Remote Control with a dry or damp cloth to remove dirt or dust. Do not expose the keys directly to liquid.

#### Replacing the Keyfob / Remote Control battery

1. Using a small screwdriver open the Keyfob / Remote Control (see Figure 1).
2. Remove the old battery and insert the new one (see Figure 2).
3. Close the Keyfob / Remote Control cover (see Figure 3).

Replace the batteries once a year or whenever the low battery LED blinks orange/green.

#### Technical Information

##### SPECIFICATIONS

Range:	Up to 200m (650 feet) range (LOS)
Frequency:	868.65 MHz
Power output	10 mW
Battery Type:	CR2430, 3V lithium, 280 mA
Typical Battery Life:	3 years
Low Battery Threshold	2.5V
Quiescent Current Consumption	4 µA
Maximum Current Consumption	18 mA
Dimensions (H x W x D):	41 x 41 x 17 mm (1.60 x 1.60 x 0.70")
Operating temperature:	-10 C to 55 C (14 F to 131 F)
Average Relative Humidity	75%
Weight	20 gram (0.7 oz.)
Standard Compliance	EN 50131-1, EN 50131-6 Type C and EN50131-3 Grade 2 Environmental Class II, Type A ACE

#### ORDERING INFORMATION

P/N	Description
RW332KF1	Panda 1-Way 4-button Keyfob 868 MHz



## Introduction

La nouvelle télécommande monodirectionnelle sans fil de RISCO Group, qui allie des technologies avancées à une conception contemporaine, compacte et simplifiée, constitue le choix idéal des propriétaires soucieux de garantir la sécurité de leurs biens. La télécommande a été conçue pour une utilisation dans des villas, des appartements ou des petits bureaux. Facile à configurer, elle est compatible avec tous les systèmes intrusion sans fil de RISCO Group.

## Fonctionnement

La principale fonction de la télécommande est de fournir aux utilisateurs un moyen pratique de contrôler le système de sécurité. Facile à utiliser grâce à ses grandes touches, elle vous permet d'armer et de désarmer rapidement le système, mais également d'envoyer une alarme panique. Vous pouvez installer la télécommande sur une chaîne ou la porter comme un pendentif.





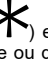
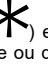


## Caractéristiques principales

- Portée jusqu'à 200m
- Remplacement facile de la pile
- Design moderne

## Opération :

Pour faire fonctionner la télécommande, appuyez sur le bouton souhaité pendant 1 seconde. La LED clignotera 2 fois après chaque appui, indiquant la bonne transmission du signal.

Common button operations:

	Le bouton 1 (  ) est utilisé pour l'opération d'Armement, et peut être configuré comme suit : Aucun, Armement total ou Armement Partiel.
	Le bouton 2 (  ) est utilisé pour l'opération d'Armement, et peut être configuré comme suit : Aucun, Désarmement.
	Le bouton 3 (  ) est utilisé pour obtenir l'état du système, transmettre une Alarme Panique ou déclencher une Sortie Programmable. Il peut être configuré comme suit : Aucun, Etat, Panique ou SP (Sortie Programmable).
	Le bouton 4 (  ) peut être configuré pour l'opération d'Armement (Total ou Partiel), ou pour déclencher une Sortie Programmable, ou ne rien faire (Aucun).
NOTE : L'opération d'armement des boutons 1 ou 4 peut être définie en Instantané ou Temporisé.	

## Configuration

### Adressage de la télécommande au récepteur

La télécommande monodirectionnelle doit s'identifier au récepteur du système. L'adressage peut être réalisé en saisissant le numéro de série à 11 chiffres de la télécommande dans le système ou en utilisant le mode RF.

Pour adresser la télécommande :

1. Configurez le récepteur du système en mode Adressage.
2. Envoyez un message d'adressage :

RF – Appuyez sur la touche  pendant au moins 2 secondes.

Code – Entrez le numéro de série à 11 chiffres dans le système.

Dans les deux cas, le récepteur du système reconnaîtra automatiquement la télécommande et un message d'adressage sera donné.

## Nettoyage et Maintenance

### Nettoyage de la télécommande

Nettoyez la télécommande avec un chiffon sec ou légèrement humide pour retirer la saleté et la poussière. N'exposez pas les touches directement à des liquides.

## Remplacement de la pile de la télécommande

1. À l'aide d'un petit tournevis, ouvrez la télécommande (voir Figure 1).
2. Retirez la pile usagée et insérez une pile neuve (voir Figure 2).
3. Refermez le boîtier de la télécommande (voir Figure 3).

Remplacez les piles une fois par an ou dès que le voyant indique une condition de batterie faible (LED clignotante orange/vert).

## Informations techniques

### SPECIFICATIONS

Portée :	Jusqu'à 200M (champ libre)
Fréquence :	868.65 MHz
Puissance de sortie :	10 mW
Type de pile :	Pile lithium CR2430, 3V, 280 mA
Autonomie de la pile :	3 ans typique
Seuil de batterie faible :	2.5V
Consommation au repos :	4 µA
Consommation maximale :	18 mA
Dimensions (H x L x P) :	41 x 41 x 17 mm
Température de Fonctionnement :	-10 C à 55 C
Humidité relative moyenne :	75%
Poids :	20 grammes (0.7 oz.)
Conformité aux normes :	EN 50131-1, EN 50131-6 Type C et EN50131-3 Grade 2 Classe Environnementale II, Type A ACE

## INFORMATION DE COMMANDE

P/N	Description
RW332KF1	Télécommande Panda 4 boutons monodirectionnelle 868 MHz

## RISCO Group Limited Warranty

RISCO Ltd., its subsidiaries and affiliates ("RISCO") guarantee RISCO's hardware products to be free from defects in materials and workmanship when used and stored under normal conditions and in accordance with the instructions for use supplied by RISCO, for a period of (i) 24 months from the date of connection to the RISCO Cloud (for cloud connected products) or (ii) 24 months from production (for other products which are non-cloud connected), as the case may be (each, the "Product Warranty Period" respectively). Contact with customers only. This Product Warranty is solely for the benefit of the customer who purchased the product directly from RISCO, or from any authorized distributor of RISCO. Nothing in this Warranty obligates RISCO to accept product returns directly from end users that purchased the products for their own use from RISCO's customer or from any installer of RISCO, or otherwise provide warranty or other services to any such end user. RISCO customer shall handle all interactions with its end users in connection with the Warranty, inter alia regarding the Warranty. RISCO's customer shall make no warranties, representations, guarantees or statements to its customers or other third parties that suggest that RISCO has any warranty or service obligation to, or any contractual privity with, any recipient of a product.

Return Material Authorization. In the event that a material defect in a product shall be discovered and reported during the Product Warranty Period, RISCO shall, at its option, and at customer's expense, either: (i) accept return of the defective Product and repair or have repaired the defective Product; or (ii) accept return of the defective Product and provide a replacement product to the customer. The customer must obtain a Return Material Authorization ("RMA") number from RISCO prior to returning any Product to RISCO. The returned product must be accompanied with a detailed description of the defect discovered ("Defect Description") and must otherwise follow RISCO's then-current RMA procedure in connection with any such return. If RISCO determines in its reasonable discretion that any Product returned by customer conforms to the applicable warranty ("Non-Defective Products"), RISCO will notify the customer of such determination and will return the applicable Product to customer at customer's expense. In addition, RISCO may propose and assess customer a charge for testing and examination of Non-Defective Products.

Entire Liability. The repair or replacement of products in accordance with this warranty shall be RISCO's entire liability and customer's sole and exclusive remedy in case a material defect in a product shall be discovered and reported as required herein. RISCO's obligation and the Warranty are contingent upon the full payment by customer for such Product and upon a proven weekly testing and examination of the product functionality.

Limitations. The Product Warranty is the only warranty made by RISCO with respect to the Products. The warranty is not transferable to any third party. To the maximum extent permitted by applicable law, the Product Warranty does not apply and will be void if: (i) the conditions set forth above are not met (including, but not limited to, full payment by customer for the product and a proven weekly testing and examination of the product functionality); (ii) if the Products or any part or component thereof: (a) have been subjected to improper operation or installation; (b) have been subject to neglect, abuse, willful damage, abnormal working conditions, failure to follow RISCO's instructions (whether oral or in writing); (c) have been misused, altered, modified or repaired without RISCO's written approval or combined with, or installed on products, or equipment of the customer or of any third party; (d) have been damaged by any factor beyond RISCO's reasonable control such as, but not limited to, power failure, electric power surges, or unsuitable third party components and the interaction of software therewith or (e) any delay or other failure in performance of the product attributable to any means of communications, provided by any third party service provider (including, but not limited to) GSM interruptions, lack of or internet outage and/or telephony failure.

BATTERIES ARE EXPLICITLY EXCLUDED FROM THE WARRANTY AND RISCO SHALL NOT BE HELD RESPONSIBLE OR LIABLE IN RELATION THERETO, AND THE ONLY WARRANTY APPLICABLE THERETO, IF ANY, IS THE BATTERY MANUFACTURER'S WARRANTY.

RISCO makes no other warranty, expressed or implied, and makes no warranty of merchantability or of fitness for any particular purpose. For the sake of good order and avoidance of any doubt:

DISCLAIMER. EXCEPT FOR THE WARRANTIES SET FORTH HEREIN, RISCO AND ITS LICENSORS HEREBY DISCLAIM ALL EXPRESS, IMPLIED OR STATUTORY, REPRESENTATIONS, WARRANTIES, GUARANTEES, AND CONDITIONS WITH REGARD TO THE PRODUCTS, INCLUDING BUT NOT LIMITED TO ANY REPRESENTATIONS, WARRANTIES, GUARANTEES, AND CONDITIONS OF MERCHANTABILITY, FITNESS FOR A PARTICULAR PURPOSE, TITLE, AND LOSS OF DATA. WITHOUT LIMITING THE GENERALITY OF THE FOREGOING, RISCO AND ITS LICENSORS DO NOT REPRESENT OR WARRANT THAT: (i) THE OPERATION OR USE OF THE PRODUCT WILL BE TIMELY, SECURE, UNINTERRUPTED OR ERROR-FREE; (ii) THAT ANY FILES, CONTENT OR INFORMATION OF ANY KIND THAT MAY BE ACCESSED THROUGH THE PRODUCT BY CUSTOMER OR END USER SHALL REMAIN SECURED OR NON DAMAGED. CUSTOMER ACKNOWLEDGES THAT NEITHER RISCO NOR ITS LICENSORS CONTROL THE TRANSFER OF DATA OVER COMMUNICATIONS FACILITIES, INCLUDING THE INTERNET, GSM OR OTHER MEANS OF COMMUNICATIONS AND THAT RISCO'S PRODUCTS, MAY BE SUBJECT TO LIMITATIONS, DELAYS, AND OTHER PROBLEMS INHERENT IN THE USE OF SUCH MEANS OF COMMUNICATIONS. RISCO IS NOT RESPONSIBLE FOR ANY DELAYS, DELIVERY FAILURES, OR OTHER DAMAGE RESULTING FROM SUCH PROBLEMS.

RISCO WARRANTS THAT ITS PRODUCTS DO NOT, TO THE BEST OF ITS KNOWLEDGE, INFRINGE UPON ANY PATENT, COPYRIGHT, TRADEMARK, TRADE SECRET OR OTHER INTELLECTUAL PROPERTY RIGHT.

IN ANY EVENT RISCO SHALL NOT BE LIABLE FOR ANY AMOUNTS REPRESENTING LOST REVENUES OR PROFITS, PUNITIVE DAMAGES, OR FOR ANY OTHER INDIRECT, SPECIAL, INCIDENTAL, OR CONSEQUENTIAL DAMAGES, EVEN IF THEY WERE FORESEEABLE OR RISCO HAS BEEN INFORMED OF THEIR POTENTIAL.

RISCO does not install or integrate the product in the end user security system and is therefore not responsible for and cannot guarantee the performance of the end user security system which uses the product.

RISCO does not guarantee that the product will prevent any personal injury or property loss by burglary, robbery, fire or otherwise; or that the product will in all cases provide adequate warning or protection.

Customer understands that a correctly installed and maintained alarm may only reduce the risk of burglary, robbery or fire without warning, but is not an assurance or a guarantee that such an event will not occur or that there will be no personal injury or property loss as a result thereof. Consequently RISCO shall have no liability for any personal injury, property damage or loss based on a claim that the product fails to give warning.

No employee or representative of RISCO is authorized to change this warranty in any way or grant any other warranty.

## RISCO Group

RISCO Group is committed to customer service and product support. You can contact us through our website [www.riscogroup.com](http://www.riscogroup.com) or as follows:

<b>United Kingdom</b> Tel: +44-(0)-161-655-5500 E-mail: support-uk@riscogroup.com	<b>Belgium (Benelux)</b> Tel: +32-2522-7622 E-mail: support-be@riscogroup.com
<b>Italy</b> Tel: +39-02-66590054 E-mail: support-it@riscogroup.com	<b>USA</b> Tel: +1-631-719-4400 E-mail: support-usa@riscogroup.com
<b>Spain</b> Tel: +34-91-490-2133 E-mail: support-es@riscogroup.com	<b>China (Shanghai)</b> Tel: +86-21-52-39-0066 E-mail: support-cn@riscogroup.com
<b>France</b> Tel: +33-164-73-28-50 E-mail: support-fr@riscogroup.com	<b>Israel</b> Tel: +972-3-963-7777 E-mail: support@riscogroup.com

## RED Compliance Statement

Hereby, RISCO Group declares that this equipment is in compliance with the essential requirements and other relevant provisions of Directive 2014/53/EU. For the CE Declaration of Conformity please refer to our website: [www.riscogroup.com](http://www.riscogroup.com). All rights reserved.

No part of this document may be reproduced in any form without prior written permission from the publisher.



© RISCO Group 09/19

5IN2809